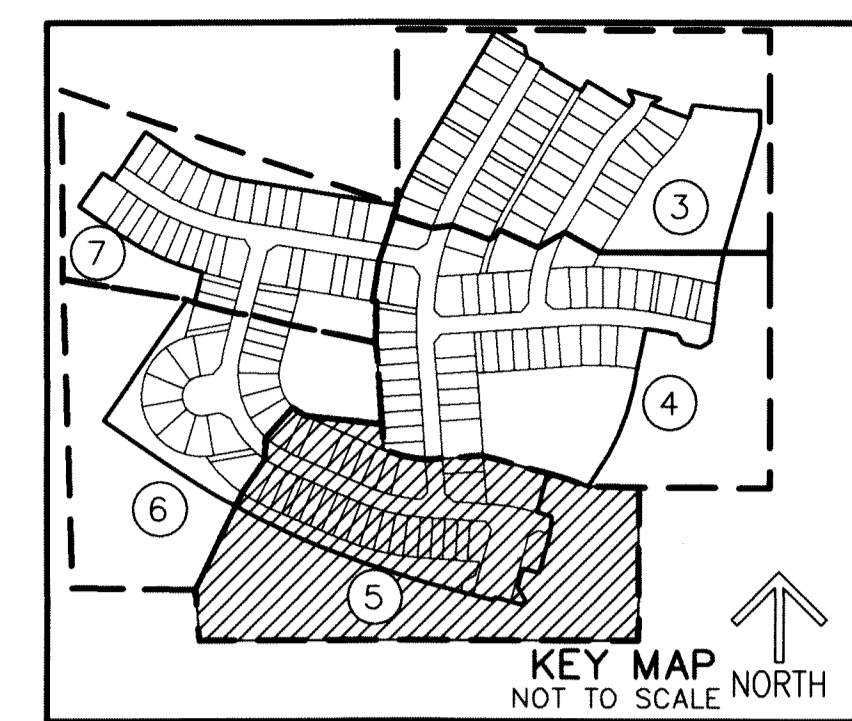


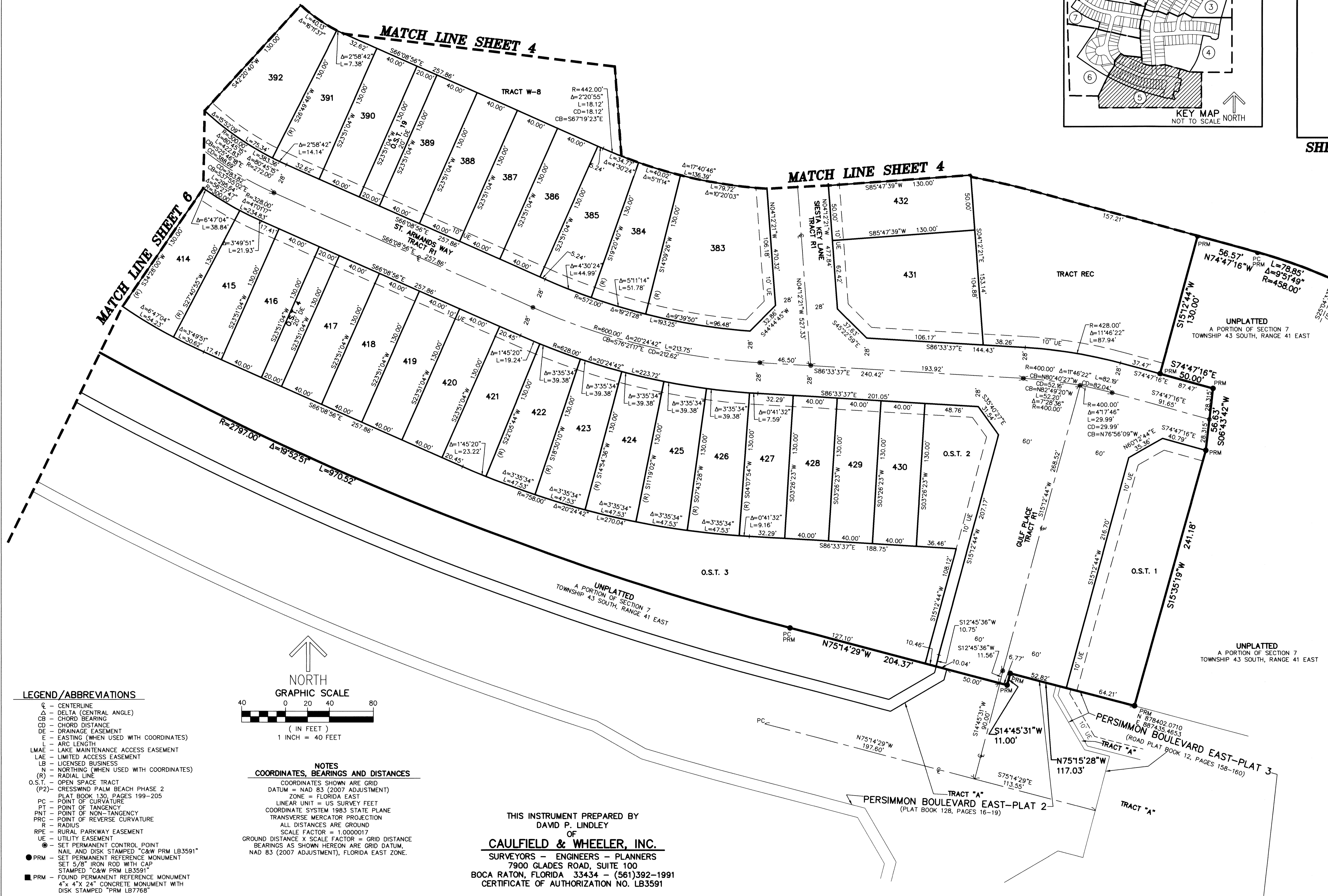
CRESSWIND PALM BEACH PHASE 3

BEING A REPLAT OF A PORTION OF O.S.T. 20, CRESSWIND PALM BEACH PHASE 2,
AS RECORDED IN PLAT BOOK 130, PAGES 199 THROUGH 205 OF THE PUBLIC RECORDS OF PALM BEACH COUNTY, FLORIDA,
AND PORTIONS OF SECTIONS 6 AND 7, TOWNSHIP 43 SOUTH, RANGE 41 EAST,
AND A PORTION OF SECTION 12, TOWNSHIP 43 SOUTH, RANGE 40 EAST, CITY OF WESTLAKE, PALM BEACH COUNTY, FLORIDA.

124

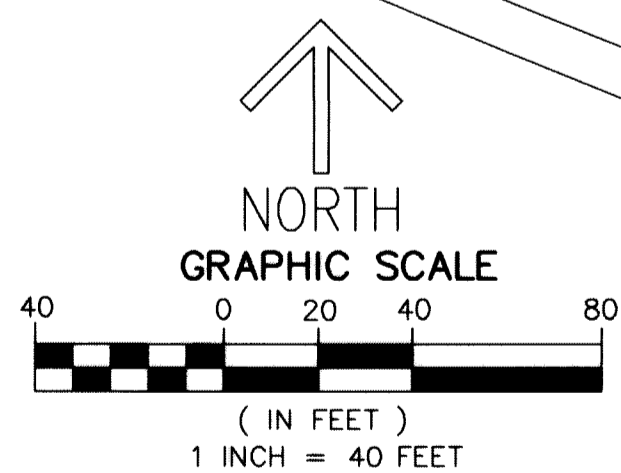


SHEET 5 OF 7



LEGEND/ABBREVIATIONS

- CL - CENTERLINE
- Δ - DELTA (CENTRAL ANGLE)
- CB - CHORD BEARING
- CD - CHORD DISTANCE
- DE - DRAINAGE EASEMENT
- E - EASTING (WHEN USED WITH COORDINATES)
- L - ARC LENGTH
- LMAE - LAKE MAINTENANCE ACCESS EASEMENT
- LAE - LIMITED ACCESS EASEMENT
- LB - LICENSED BUSINESS
- N - NORTHING (WHEN USED WITH COORDINATES)
- (R) - RADIAL LINE
- O.S.T. - OPEN SPACE TRACT
- (P2) - CRESSWIND PALM BEACH PHASE 2
- PLAT BOOK 130, PAGES 199-205
- PC - POINT OF CURVATURE
- PT - POINT OF TANGENCY
- PNT - POINT OF NON-TANGENCY
- PRC - POINT OF REVERSE CURVATURE
- R - RADIUS
- RPE - RURAL PARKWAY EASEMENT
- UE - UTILITY EASEMENT
- - SET PERMANENT CONTROL POINT
NAIL AND DISK STAMPED "C&W PRM LB3591"
- - SET PERMANENT REFERENCE MONUMENT
SET 5/8" IRON ROD WITH CAP
STAMPED "C&W PRM LB3591"
- - FOUND PERMANENT REFERENCE MONUMENT
4" x 4" x 24" CONCRETE MONUMENT WITH
DISK STAMPED "PRM LB7768"



NOTES COORDINATES, BEARINGS AND DISTANCES

COORDINATES SHOWN ARE GRID
DATUM = NAD 83 (2007 ADJUSTMENT)
ZONE = FLORIDA EAST
LINEAR UNIT = US SURVEY FEET
COORDINATE SYSTEM 1983 STATE PLANE
TRANSVERSE MERCATOR PROJECTION
ALL DISTANCES ARE GROUND
SCALE FACTOR = 1.0000017
GROUND DISTANCE X SCALE FACTOR = GRID DISTANCE
BEARINGS AS SHOWN HEREON ARE GRID DATUM,
NAD 83 (2007 ADJUSTMENT), FLORIDA EAST ZONE.

THIS INSTRUMENT PREPARED BY
DAVID P. LINDLEY
OF
CAULFIELD & WHEELER, INC.
SURVEYORS - ENGINEERS - PLANNERS
7900 GLADES ROAD, SUITE 100
BOCA RATON, FLORIDA 33434 - (561)392-1991
CERTIFICATE OF AUTHORIZATION NO. LB3591